

## Table of Contents

Group Officers	1
Musings from Chair	1
Facebook	2
2012 AAG Recap	2
2012 Awards Recap	3
2013 Awards Call	4
Recent Publications	5
Conferences	6
Websites of Interest	7
Student Profile	7
Other News	8
Odds and Ends	9

## Specialty Group Officers

### Chair

Tom Allen  
East Carolina University

### Vice-Chair

Karsten Shein  
NOAA

### Secretary/Treasurer

Tom Crawford  
East Carolina University

### Board Member

Eugene Farrell  
Rutgers University

### Board Member

Keqi Zhang  
Florida International

### Board Member

Harry Williams  
University of North Texas

### Student Member

Phillip Schmutz  
Louisiana State University

### Web Editor

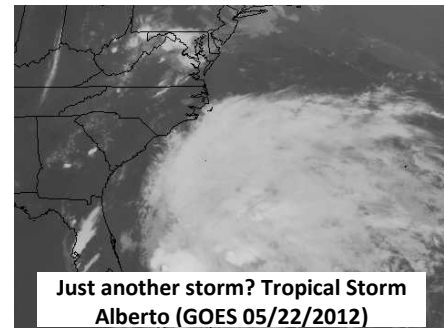
Richard Daniels,  
Washington State DOT

## Musings from the Chair

Tom Allen, East Carolina University

Reflecting on this past year of COMA and the AAG Annual Meeting, I am astounded by the continued growth and impact of so many in our group on coastal and marine hazards research. By the time you read this it may well be Hurricane Season. This year we got a head start on the East Coast, with a near brush by Tropical Storm Alberto, May 21<sup>st</sup> -23<sup>rd</sup>. As Alberto developed, colleagues and I were preparing to host our annual NC Hurricane Workshop, with Dr. Bill Read, the National Hurricane Center Director, emergency managers, National Weather Service, and news media and agencies. Fortunately, Alberto stayed "on track," well offshore east of Cape Hatteras.

Social media and Hurricane Irene were the hot topics. Key revelations: At 24 hours before landfall, Irene was near category 3 strength and bearing down on NC. Luckily, she was downgraded to a category 1, yet the sounds of NC still experienced up to 13 feet of storm surge and two new inlets were cut through the Outer Banks. Some folks in harm's way dropped their guard upon news of the downgraded strength....and not a few folks found themselves needing rescue. Whole communities on the Outer Banks were cut off by highway access for months. Although NC was spared major casualties, clearly Irene demonstrated there is no such thing as "just a tropical storm." One of our local TV weather forecasters spent a marathon 36 hours continuously broadcasting during the storm. Later, he heard great feedback from locals who recounted how helpful it was to "watch him on the radio" as they were without power in a storm that seemed to never end. His ability to communicate his mental map of places and conditions across rural eastern NC buoyed many spirits during a storm that dropped as much rain as NC's worst natural disaster Hurricane Floyd in 1999. His place knowledge, accumulated over a career of local service, revealed a "hyperlocal" knowledgebase that had a profound impact on the community resilience. He remarked on how important is the power of maps and geospatial technology to helping him communicate and to forecasters and emergency personnel to effectively prepare and respond.



Hurricanes and coastal hazards clearly crystallize a focus society, the environment and geography providing us opportunities, for research, service, education, and raising awareness. As evidenced by the continued growth in coastal hazards within our group, *I encourage you to apply your expertise in service and engagement this year* by reaching out, at least once, to a local community, a colleague (be it geography or another discipline), or to a local emergency manager, planner, or member of the media. Beyond advancing science, we can also demonstrate relevance and the critical role of geography to addressing serious and increasing threats of coastal hazards.

**Tom Allen**

## COMA is now on facebook

In order to tap into a resource that is wholly embraced by this current generation we have created a Facebook page for COMA. Please “like” Coastal & Marine Geography (COMA) of AAG. Post any interesting conferences, scholarships, news and great (or goofy) photos. This is a great way to keep in touch- especially with our student members! If you have trouble posting please contact our student board member Eugene Farrell at [farrell@marine.rutgers.edu](mailto:farrell@marine.rutgers.edu) to add your post.

COMA Facebook: <http://www.facebook.com/?sk=welcome#!/pages/Coastal-Marine-Geography-COMA-of-AAG/119130281434567>

COMA website: <http://www.aagcoma.org/>

## 2012 AAG Meeting Recap

The Annual AAG meeting held in NYC February 24-28 was one of the largest meetings to date with approximately 8,600 attendees, 6,100 abstracts, and 1,150 speciality group sponsored sessions. COMA was well represented according to the following summary statistics:

- 23 COMA sponsored sessions
- 2 full Psuty Student Merit Award paper sessions
- 1 Student Illustrated Paper award session
- 1 AAG themed highlight session
- Multiple DEM and hurricane co-sponsored sessions.

### Looking Ahead to 2013

Mark your calendar for the 2013 Annual AAG meeting in Los Angeles, April 9-13. As in the past, members are encouraged to organize thematically focused COMA sessions. Look for calls and more information during late summer and early fall. New initiatives are encouraged to refresh our specialty group, so please consider proposing a session, invite a colleague or student to join COMA, and share any ideas for research, education, or awareness-raising ideas for the group.

One of the topics under discussion for proposal to the group is creation of a new COMA Paper of the Year Award.

Consider organizing a session or contact the Board members with ideas. Information for organizing sessions and a Call for COMA Papers and sessions will be sent this summer. General info can be found at the AAG website [http://www.aag.org/cs/annualmeeting/call\\_for\\_papers](http://www.aag.org/cs/annualmeeting/call_for_papers)

# 2012 AAG Awards Recap

Congratulations to awards announced at the 2012 AAG meeting in NYC.

## R.J. Russell Award

The **COMA 2012 R.J. Russell Award**, presented in recognition of an individual's major contributions to the field of coastal or marine geography, was presented to **Colin Woodroffe** of the University of Wollongong, Australia. **Dr. Woodroffe** was not able to attend the meeting and his acceptance speech was read by Tom Allen.

Nominations for the 2013 Russell Award were called for and closed at the end of the Business meeting. The Award Committee received one nomination for consideration. The award will be announced and presented at the 2013 AAG Annual Meeting in Los Angeles.

Nominations for the 2014 Russell Award are now open and will remain open until the close of the 2013 COMA Business meeting. Two letters in support of a nomination are required, and an unsuccessful nomination will automatically carry forward to the next award year.

## Student Paper Awards

**COMA 2012 Norb Psuty Student Paper Merit Award** winners announced at the conclusion of the two paper sessions:

### Best Human Dimensions paper:

**Nathan Kettle**, University of South Carolina for his paper: "The influence of perceived risk, uncertainty, and trust on coastal climate change adaptation planning"

### Best Physical Processes paper ( 2 awards were given):

**Patrick Barrineau**, University of South Carolina for his paper: "Sediment Transport and Wind Flow Around Hummocks."

**Eugene J. Farrell**, Texas A&M University for his paper: "Mass flux profiles of wind blown sand: a review of laboratory, field and numerical studies."

### **COMA 2012 Illustrated Paper Student Merit Award** winner:

**Anna Davenport** of the Dept. of Geography at San Francisco State University for her paper: "Modeling Geomorphic Effects on Eelgrass (*Zostera marina*) Distribution Before and After Restoration, Nisqually Delta, Washington.

# 2013 Student Awards Call

## Norb Psuty Student Paper Merit Award

The Norb Psuty Student Paper Merit Award is given for a meritorious student presentation in coastal or marine geography. Student participants must be members of the COMA Specialty Group and of the AAG. Full-time and part-time undergraduate and graduate students are eligible. Awards may be given only for oral paper presentations. Posters are not eligible for this competition. Recipients must be the first or sole author and the presenter of the paper. The same individual can receive the award twice. A \$200 prize is awarded to defray the cost of AAG and specialty group membership and travel. A certificate of recognition is also provided.

**Criteria for Merit:** Traditionally, this award is given to a student from human dimensions and/or physical geography. Not merely a “best” paper award, the merit committee also takes into account oral presentation, supporting visuals, originality and quality of the research, and ability to field questions from the audience.

**How to apply:** For full consideration, submit your abstract to Tom Allen ([crawfordt@ecu.edu](mailto:crawfordt@ecu.edu)) one week before the final deadline for papers for the Annual Meeting. The award committee will review papers for appropriate content for consideration.

## COMA Student Illustrated Paper Merit Award

Similar to the Psuty Award, the Student Illustrated Paper competition recognizes excellence in research in coastal and marine geography. Posters are not eligible for this competition. A \$100 award is provided to defray costs of AAG and COMA membership and travel.

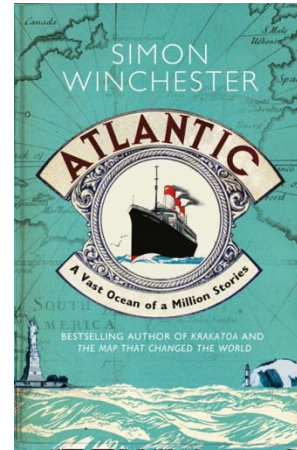
**Criteria for Merit:** As with the Psuty Award, the student should demonstrate rigorous research in their presentation, originality and quality, supporting visuals, and handling of questions from the audience. Selections are made by the merit committee composed on the Vice-Chair and Board.

**How to apply:** For full consideration, submit your abstract to Tom Allen or Tom Crawford ([crawfordt@ecu.edu](mailto:crawfordt@ecu.edu)) one week before the final deadline for papers for the Annual Meeting. The award committee will review papers for appropriate content for consideration.

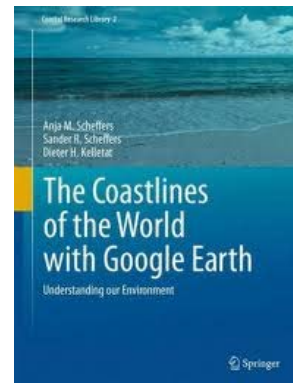


## Recent Publications

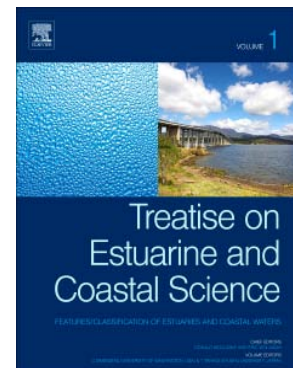
Winchester, Simon. 2011. **Atlantic: A Vast Ocean of a Million Stories.** “ In this utterly original biography, Simon Winchester explores the life of the Atlantic; it’s birth, its relationship with mankind, and what lies in store for it once man has left the stage. He charts the development of the first settlements by the Oceanside - the communities of Celts and Vikings and whose lives depended on the sea - and delves into the age of exploration, venturing to forgotten worlds. The building of some of the world’s most beautiful port cities - London, Rio de Janeiro, New York, Casablanca - is also examined, along with the creation of settlements and colonies in and around the sea.”  
<http://www.harpercollins.com/>



Sheffers, A. et al. 2012. **The Coastlines of the World With Google Earth: Understanding Our Environment.** Springer. “The book Coastlines of the World with Google Earth aims to draw people’s attention (within and outside of the science community) towards coastal sciences and spark interest for the extraordinary diversity and beauty of coastal environments. The book illustrates the fascinating variety of coastal landscapes using images from Google Earth’s virtual globe that allow us to explore the world and demonstrate knowledge and applications of coastal science in many different fields in an engaging visual tour. The book of Anja and Sander Scheffers and Dieter Kelletat is a true cornucopia for everyone, both scientists and laymen, interested in coastal geomorphology.”



Mclusky and Wolansky. 2012. **Treatise on Estuarine and Coastal Science.** Elsevier. “...examines our estuaries and coasts, and its interactions and feedbacks with humanity, from the inland watershed to the ocean shelf. The Treatise provides a comprehensive scientific resource for all professionals and students in the area of estuarine and coastal science.”  
<http://store.elsevier.com/Treatise-on-Estuarine-and-Coastal-Science/isbn-9780123747112/>



# Conferences

## **27<sup>th</sup> Annual Landscape Ecology Symposium, April 8-12, Newport, RI**

<http://www.usiale.org/newport2012/> The annual meeting of the US-IALE (Intl. Association of Landscape Ecology) had plenary speakers and presentations of interest to coastal geographers. Plenary speaker Scott Nixon (URI) is a noted researcher focusing on ecology of coastal marine ecosystems. Mark Anderson of The Nature Conservancy has research interests in seafloor mapping, aquatic biology and marine spatial planning. A symposium of USGS staff covered historical, current and future land-cover mapping product developments including those related to coastal C-CAP products. Three well attended coastal field trips including one to Block Island featured themes of local sustainable agriculture, coastal wetland landscapes, and tourism.

### Upcoming Conferences

[The Coastal Society](#), June 3-6, 2012 Miami, FL.

[50<sup>th</sup> Estuarine Coastal Sciences Association Conference](#), June 3-7, 2012, Venice Italy.

[International Coastal Zone Canada Conference 2012](#), June 9-14, 2012. Rimouski, Quebec.

[12<sup>th</sup> International Coral Reef Symposium](#), July 8-13, 2012, Cairn, Australia.

[2012 ESRI International User Conference](#), July 23-27, 2012, San Diego, CA.

[4<sup>th</sup> Intl. Conference on Geo-Information Technology for Natural Disaster Management](#), August 14-15, 2012, Colombo, Sri Lanka.

[32<sup>nd</sup> International Geographical Congress](#), August 26-30, 2012, Cologne, Germany.

[Coastal and Estuarine Research Federation Meeting](#), November 11-14, 2012, Mar Del Plata, Argentina.

[Coastal GeoTools 2013](#), March 25-28, 2013 Myrtle Beach, SC.

[Coastal Processes 2013](#), April 9-11, 2013, Gran Canaria, Spain.

[44<sup>th</sup> Binghamton Geomorphology Symposium, Coastal Geomorphology and Restoration](#), October 18-20, 2013, New Jersey Institute of Technology.



## Websites of Interest

**Bathymetry Data Viewer from NOAA's Coastal Services Center.**

<http://www.csc.noaa.gov/digitalcoast/data/bathymetrydataviewer>

**Surging Seas.** An interactive sea level rise atlas.

<http://sealevel.climatecentral.org/>

**LASTools.** Free software for converting, filtering, viewing, gridding and compressing LiDAR Data.

<http://www.cs.unc.edu/~isenburg/lastools/>

**CIESIN SEDAC's Interdisciplinary Data and Related Resources on Marine and Coastal Regions and Sea Level Rise.**

<http://sedac.ciesin.org/theme/marine-and-coastal>

**GeoZone – A Blog for Coastal GeoGeeks.** Fun musings including an entry on how to detect zombies with LiDAR.

<http://www.csc.noaa.gov/digitalcoast/geozone>

## Student Profile

Andrew Bennett (PhD Candidate at East Carolina University)

Andrew Bennett, an active COMA member for the past three years, grew up along the coast of Long Island. He often accompanied his mother, a regional beach manager, on various field outings which undoubtedly inspired his later coastal interests. He earned a BA in Urban and Community Studies at the University of Connecticut where he also earned Big East All-Academic Team honors as a member of the UConn track and field team. He then entered the MA Geography program at ECU where he focused on coastal planning and policy. He was a major contributor to a NCDOT funded Indirect and Cumulative Impact Study for the Mid-Currituck



Bridge Project, a report on impacts of a proposed bridge connecting the northern Outer Banks to the mainland. His MA internship report resulting from work with the Long Island consulting firm Cameron Engineering, LLC was titled "Combining the Tools of Smart Growth and Citizen Participation".

## Student Profile (contd.)

After earning his MA, he entered the ECU's PhD Program in Coastal Resources Management (CRM) with a primary track in Social Science and Public Policy and secondary track in Coastal and Estuarine Ecology and Geosciences. He is currently deep into the writing stages of his dissertation, "Characterizing Patterns and Drivers of Land Use/Land Cover Change Along the Atlantic Coast Barrier Islands: Examining the Roles of Development Pressure, Accessibility, and Policy" advised by Dr. Tom Crawford. Andrew has thoroughly enjoyed his time in Greenville, NC and his professional and social connections with the CRM Program and the Department of Geography. As he nears PhD completion he is looking forward to future opportunities to continue his interests and expertise in human dimensions of coastal environments.

## Other News

At the 2013 COMA Business Meeting, Karsten Shein will assume the Chair, and the following positions will be opened for election:

- Vice Chair (2-yr term)
- Board Member (2-yr term)
- Student Board Member (1-yr term)

If a member wishes to be considered for any open position, they may self-nominate by alerting the COMA officers of their intention to run. Nominations will close during the 2013 Business meeting.

COMA Board will draft a proposal for a Best Paper of the Year award. The award would be given to a published, peer-reviewed coastal or marine geography paper.

Other potential COMA activities being considered include ensuring an AAG highlighted COMA session each day of the Annual meeting, an honored international speaker, and increasing COMA participation in regional AAG meetings.

Currently, COMA membership stands at 222 members, of which 135 are student members and 87 are non-student members. Student members pay a \$1 annual membership fee, and non-students pay \$5 per year. The COMA account has a balance of \$3,980.25.

Special thanks: Richard Daniels for his continued great work in maintaining the COMA website, Eugene Farrell for establishing the COMA Facebook page, and Karsten Shein for his diligence in keeping minutes of the 2013 business meeting.



## Odds and Ends



Image from recently defended dissertation by Dr. Sanderson (Sandy) Shores (PhD 2012, Brigadoon University) titled "Foucauldian Analysis of Coastal Discipline and Madness: An Integrative Theory of Children's Geographies and Sediment Transport Dynamics." (Also can be found at <http://www.condolux.net/vacations-blog/2010/11/09/top-15-funny-beach-photos/>).

**Call for Materials:** During a transition period, the Secretary/Treasurer has been late in distributing this newsletter. We're back on track now so keep your eyes open for a timely Fall newsletter. Send interesting news/views, field photos from summer activities or other items of interest for inclusion to Tom Crawford at [crawfordt@ecu.edu](mailto:crawfordt@ecu.edu).